


Title:

## Certificate of Analysis (CoA)

<b>Date:</b>	4/14/2026	
<b>Date Tested:</b>	4/13/2026	
<b>Customer:</b>	Finnrick	
<b>Testing material:</b>	BPC-157	
<b>Lot Number:</b>	PT-EA605BA4716A-1	
<b>BT Sample ID:</b>	005000039520163	
<b>Labeled Peptide</b>		
<b>Content/Potency:</b>	10 mg	
<b>Storage:</b>	R.T.	
<b>Visual Description:</b>	small clear vial: white sample, black label, silver crimp, blue plastic cap.	
<b>Labeled as:</b>	BPC-157	
<b>Manufacturer:</b>	n/a	
<b>Testing Purpose:</b>	FTIR and HPLC analysis for the identification, purity, potency and composition of a peptide product. It does not provide information on particulate matter, microbial contamination or presence of endotoxins.	

Test	Method	Specification	Result
General Appearance	USP <630>	white powder	white powder
Mass	USP <41>	As recorded	60.8 mg
FTIR Identification and Composition Analysis	USP <197A>	Sample spectrum should confirm the content of peptide via characteristic bands	FTIR sample spectrum confirms the presence of BPC-157 with addition of excipient(s)/fillers.
HPLC Purity of Peptide Assay	USP <621>	Specifications: $\geq 98\%$	99.6 %
HPLC Potency Assay	USP <621>	Specifications: 90 – 110% of 10 mg	11 mg (110.3 %)
Peptide-to-Excipients Ratio	USP <1151>	Recommended ratios of (1:2) to (1:10) for (peptide: excipients)	11 : 49.8 mg (1:4.5)

The results of the CoA relate only to the item(s) tested and applied to the sample as received.

Andrea Castro, AS  
Scientist-II  
BTLabs

Verna Zheng, AS  
Scientist-II  
BTLabs

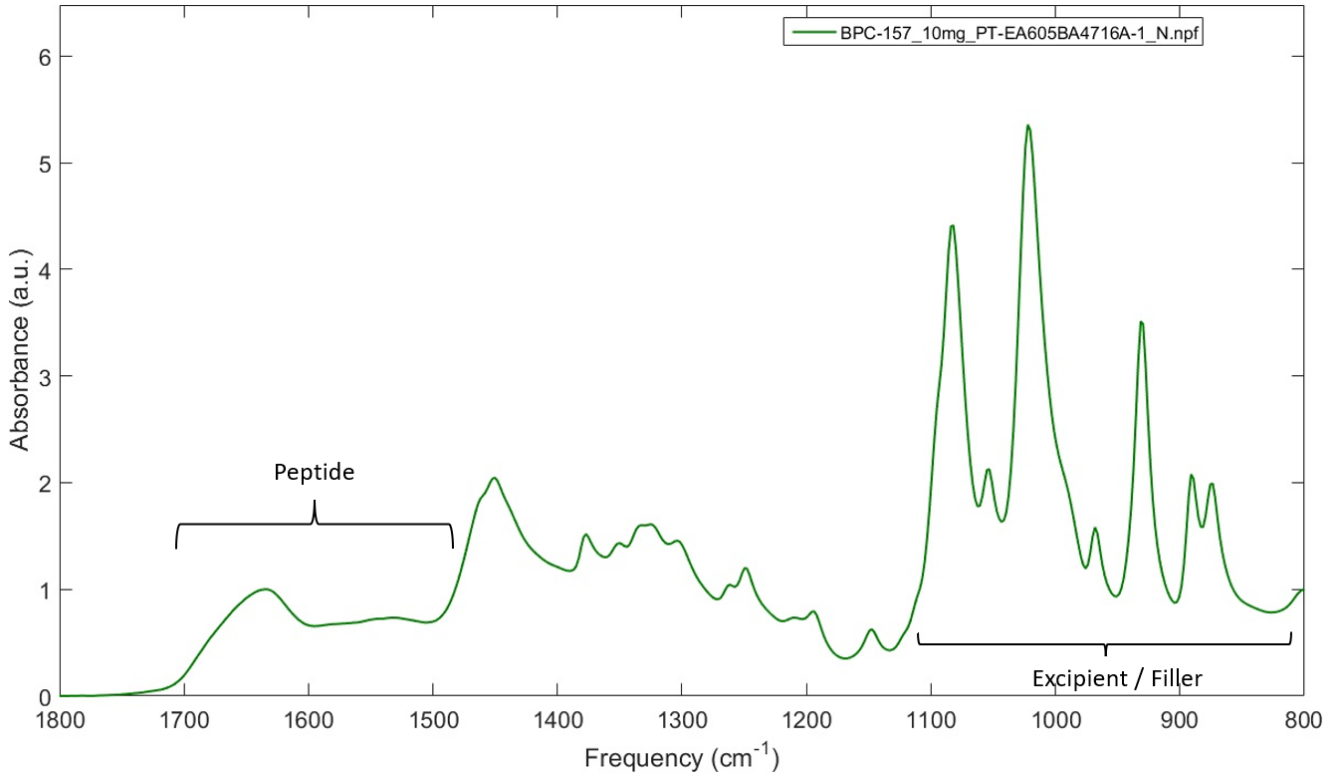
5730 Corporate Way | Suite 220 | West Palm Beach, FL 33407  
Phone: (561) 625-0133

E-mail: [info@btlabtesting.com](mailto:info@btlabtesting.com) | Website: <https://btlabtesting.com>

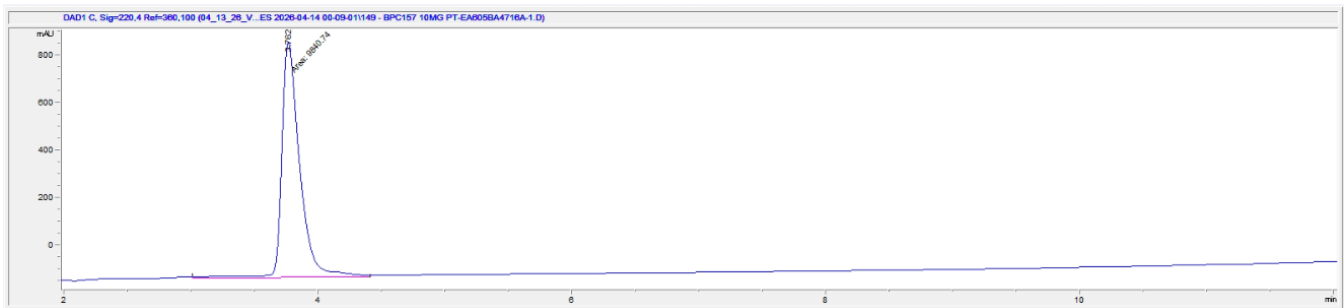
Title:

## Certificate of Analysis (CoA)

### FTIR ID and Composition Analysis: BPC-157 Lot PT-EA605BA4716A-1



### HPLC Purity and Potency Assay @ 220 nm: BPC-157 Lot PT-EA605BA4716A-1



#### BPC-157 Lot PT-EA605BA4716A-1 @ 220 nm

Peak #:	Retention Time (min)	Area (mAU*s)
1	3.762	9840.7